



WWW.WALLSFORMS.COM

RETAIL DISPLAY SYSTEMS | COMPONENTS | STORE PACKAGES | BRANDED/P.O.P. | SIGNWARE | SHOWROOM



WALLS + FORMS | RETAIL DISPLAY SOLUTIONS

WALLS + FORMS

**SIMPLE**

There are no complicated parts to worry about. Our system eliminates assembly errors, mis-ordering and high inventory costs. Each display consists of minimal components. Panels, panel fastening trims and accessory options come completely from one source, Walls+Forms. Panels snap together in minutes and full merchandising can be accomplished in a few hours.

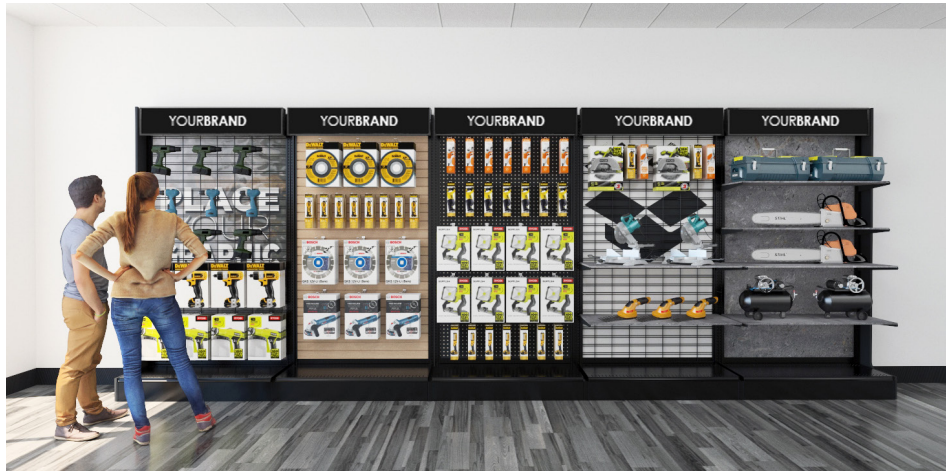
**AFFORDABLE**

Part standardization permits low prices with low minimum quantity. High construction costs, mess and lengthy time delays are eliminated.

**UPGRADEABLE**

Each display system has been designed with the future in mind, need to upgrade your store? no problem, with Walls+Forms you will save thousands of dollars, start the right way by utilizing our systems from the beginning and never spend money on starting from scratch, with a very low budget you can create a whole new look in a matter of hours!





## SLIMLINE 96" Tall Display Unit (Starter)

Part Number: FD-0556-SW (Slatwall)

**Overall Dimensions:**  
49.5"(L) x 95"(H) x 21"(D)

**FEATURES:**

- Free-standing, solid metal frame.
- Quick and easy installation and change outs.
- Can be setup individually or in a series.
- Flexibility to move away from wall and reconfigure

**OPTIONS:**

- Frame is available in Black & White Finish
- Panel options include: Slatwall, Solid, Slat-Grid and/or Full Graphic Background.
- Standard panel colors are White, Black, Gray, Hardrock Maple, Walnut & Cherry

Slim-Line Connector provides stability to frame

Slim-Line Uprights w/ Standards Hole Pattern or shelving and brackets

Slim-Line Panel Retainers for easy install and change-outs

Wire Management designed into uprights with end-plates to conceal after install

Durable Metal Kick Plate

Heavy Duty Metal Base Deck

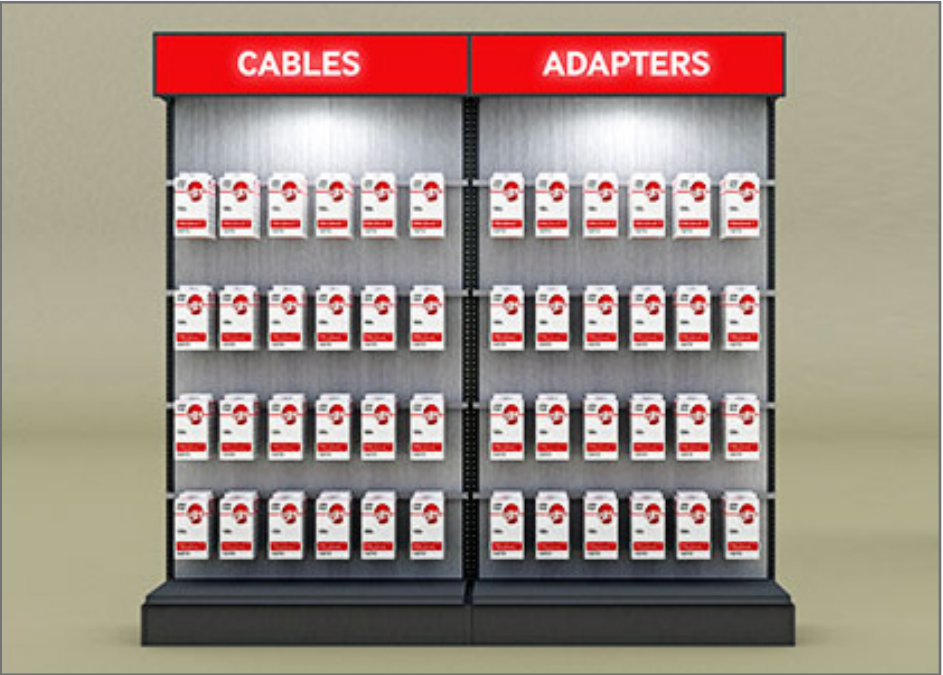
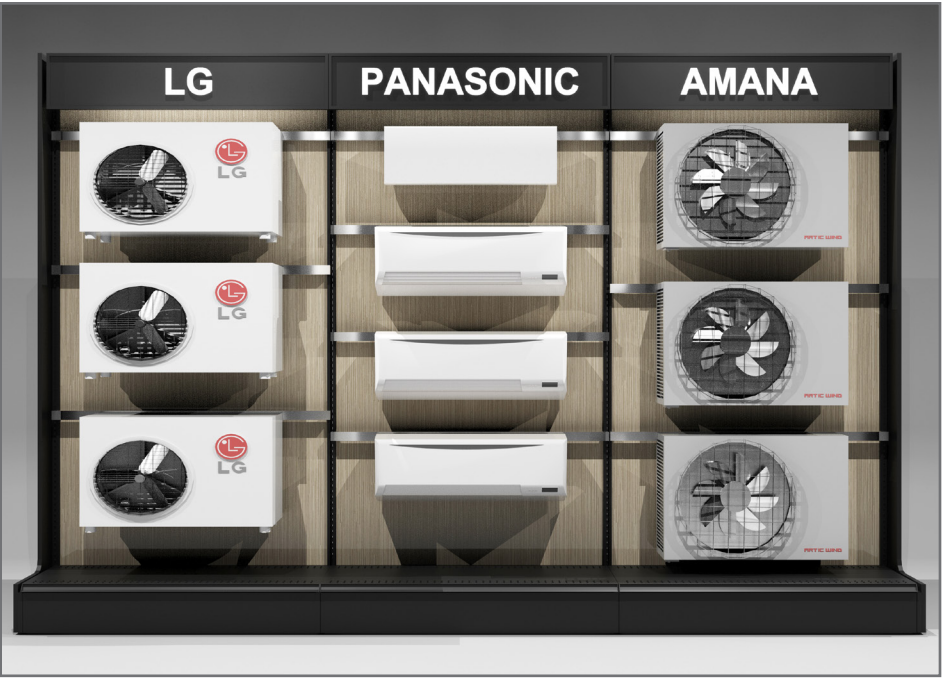
**simple. structural. stylish.**

**Simplicity of Parts**  
Ships flat (RTA). Assembles in minutes!

**Available Accessories:**  
shelves, back-lit headers, brackets, hooks, cabinets, end-plates and more!



SLIMLINE 96" Tall Display Unit in the retail industry











## SLIMLINE End-Cap

Part Number: FD-0735-SW

### Overall Dimensions:

38"(W) x 54"(H) x 21"(D)

Can be used in conjunction with **Floor Gondola**



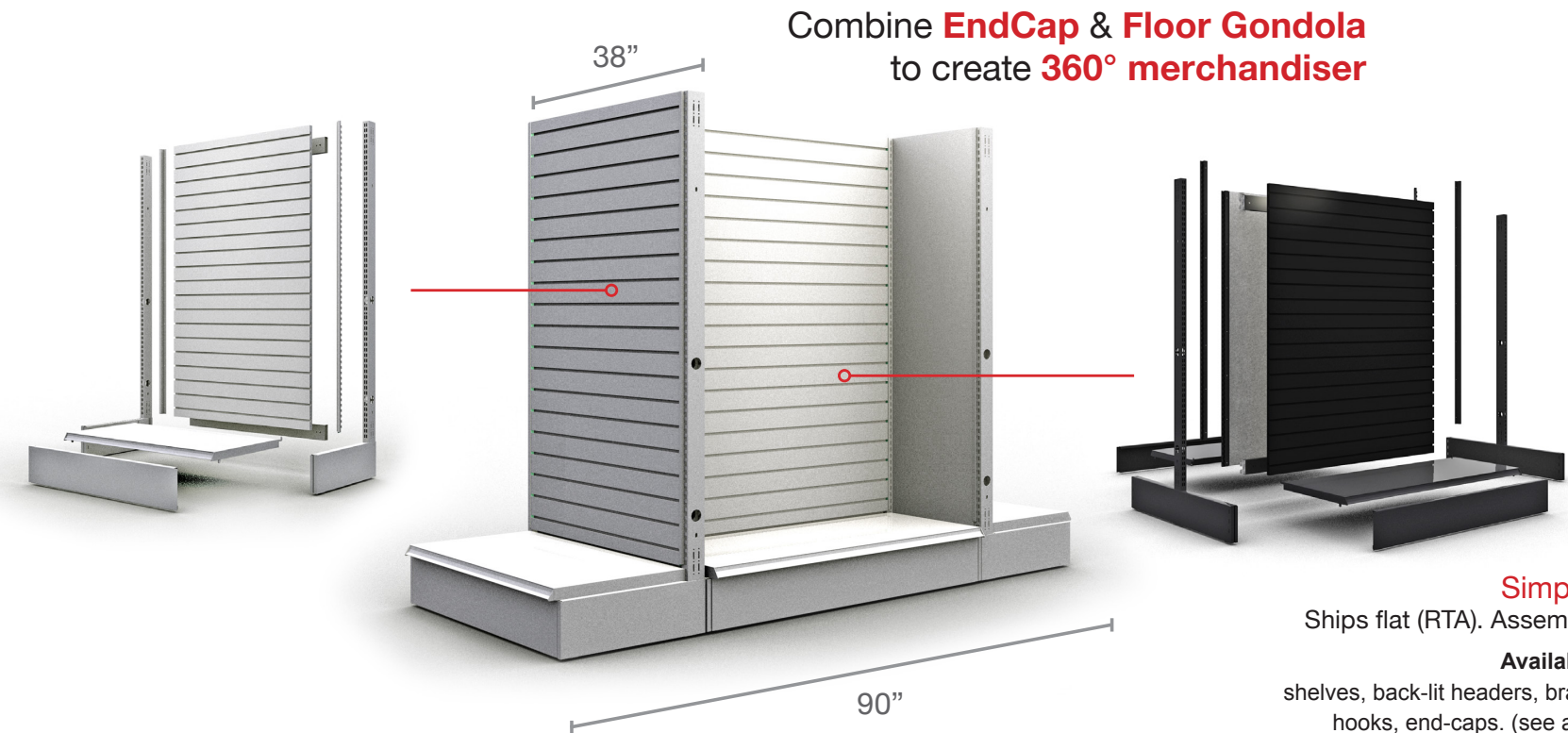
## SLIMLINE Floor Gondola

Part Number: FD-0734-SW (Slatwall)

### Overall Dimensions:

49.5"(W) x 54"(H) x 38"(D)

Can be used in conjunction with **Endcap**



**Simplicity of Parts**  
Ships flat (RTA). Assembles in minutes!

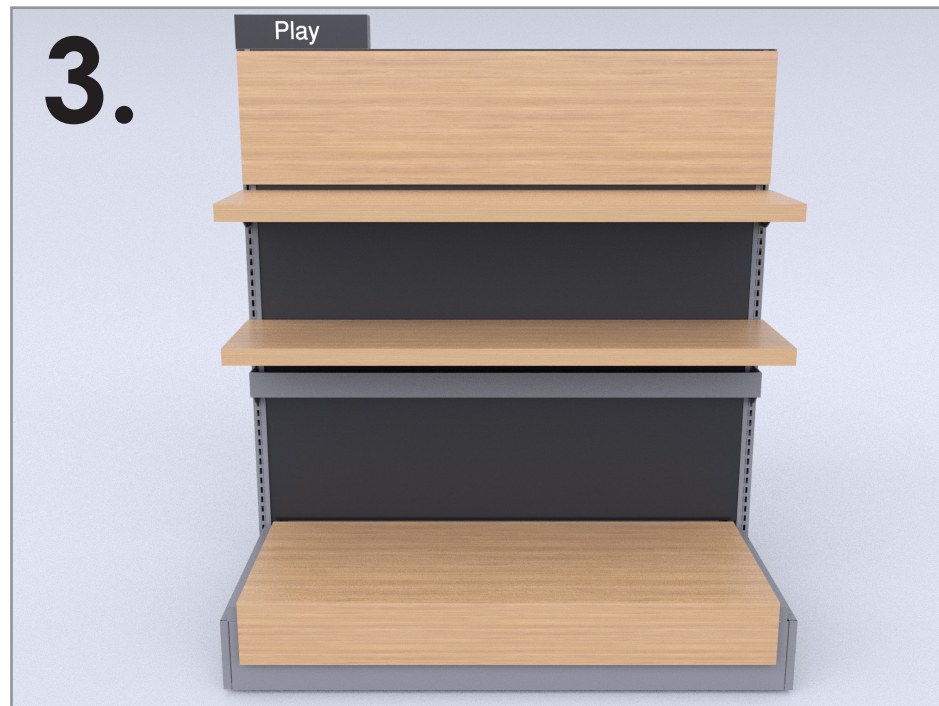
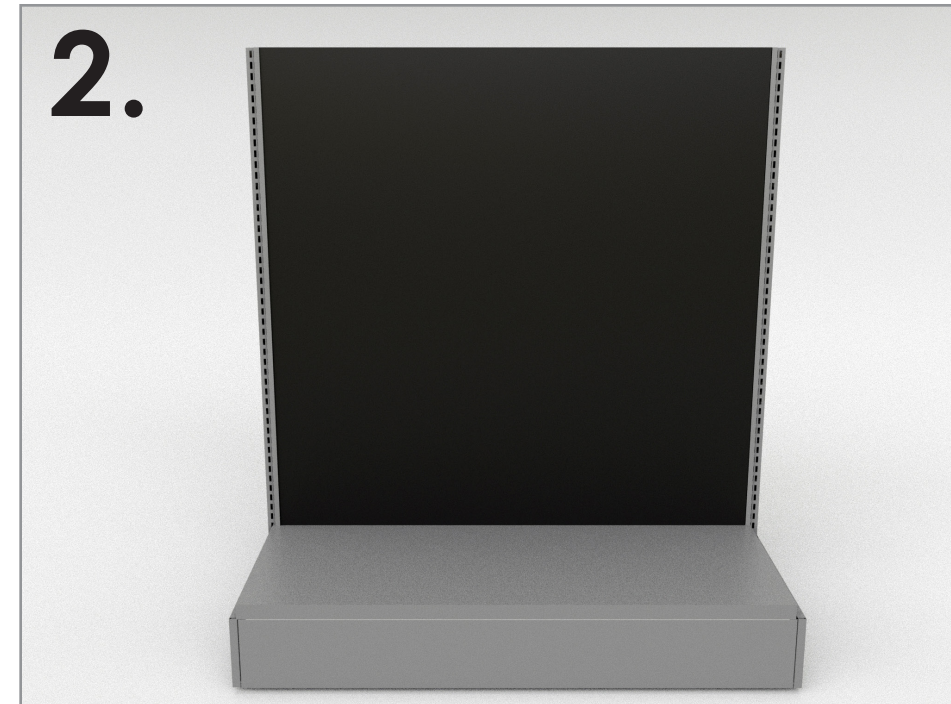
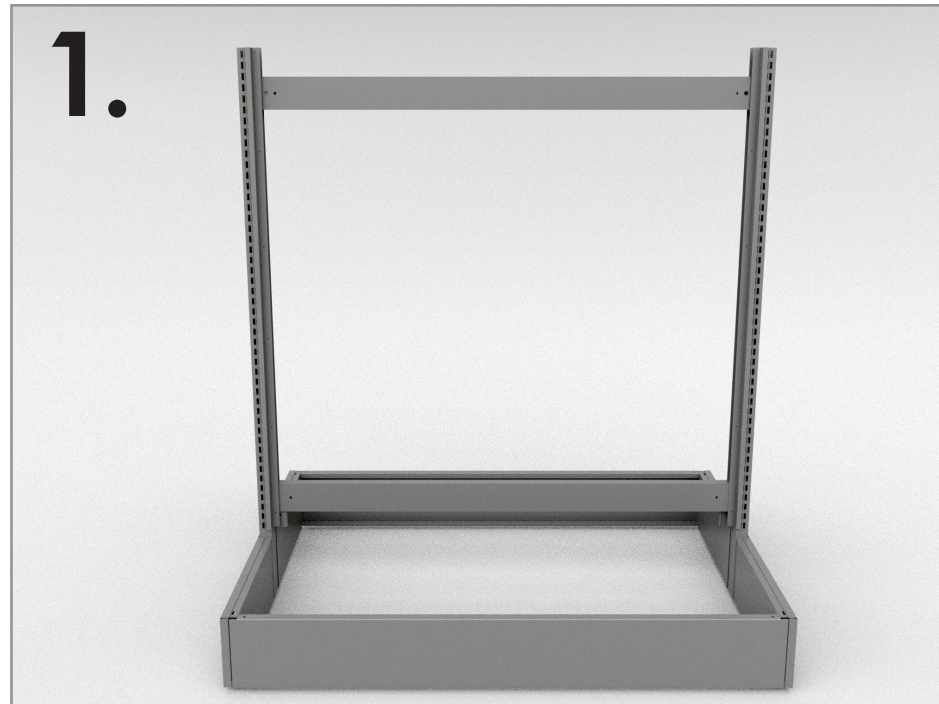
**Available Accessories:**  
shelves, back-lit headers, brackets, mega-bar, hooks, end-caps. (see accessories page)



**SLIMLINE EndCap & Floor Gondola Display Unit in the retail industry**







UPGRADE AS EASY AS 1, 2, 3, 4



# SLIMLINE

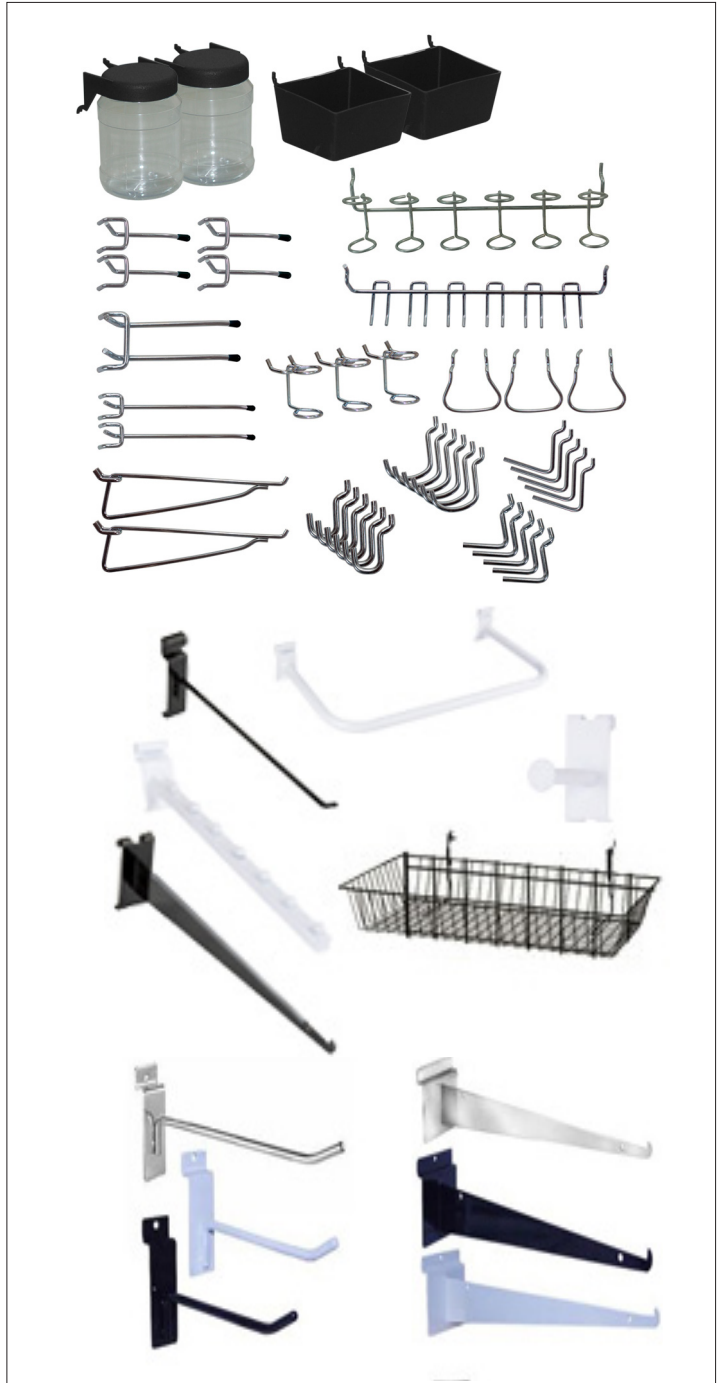
## FEATURES, ACCESSORIES & ADD-ONS



The Slim-Line Display System was developed to address the limitations and cumbersome process of change-outs that are found with standard gondolas. In retail, flexibility to change and refresh is critical, and we found that the standard systems that were out there did not address this need in a manner that made it user-friendly for the end-user. The core difference in this system is the ability to construct the frame without being supported by the panel. This allows you to change up the panels with slat-wall, solid colors and graphics quickly and easily.

### COMPATIBLE ACCESSORIES

- The strength and solid build coupled with incorporating various panel options now means you can merchandise and display your products with ALL ACCESSORIES compatible with slatwall, gridwall, peg board and more!



## SHELVES & WONDER BAR

**A.** Easily add shelves to any of your Slim Line Gondolas to fit your product display needs, simply insert the brackets into the slotted uprights and lay down your shelves

**B.** The Wonder Bar is a strong and stable additional method of displaying your products on your SlimLine system, use it to display heavy duty products or to hang accessories without the need of a back panel.





LIGHTBOX ILLUMINATED HEADERS

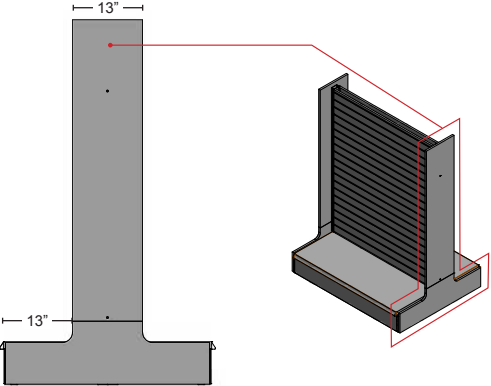
**Slim-Line LightBox Header**  
Part #: SG-0119  
Dims: 48" x 9" x 4"



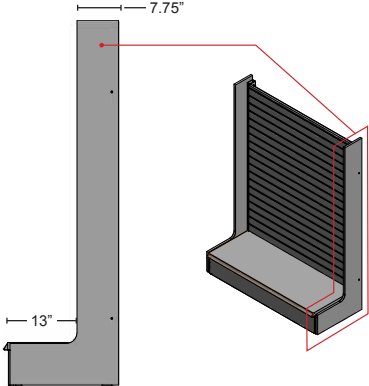




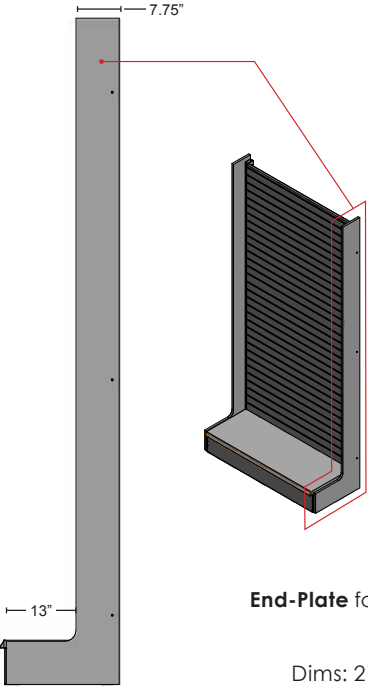
SLIM LINE END PLATES



**End-Plate for Slim-Line Floor Gondola**  
Part #: PNL-0290  
Dims: 38" w x 55" x 0.75"



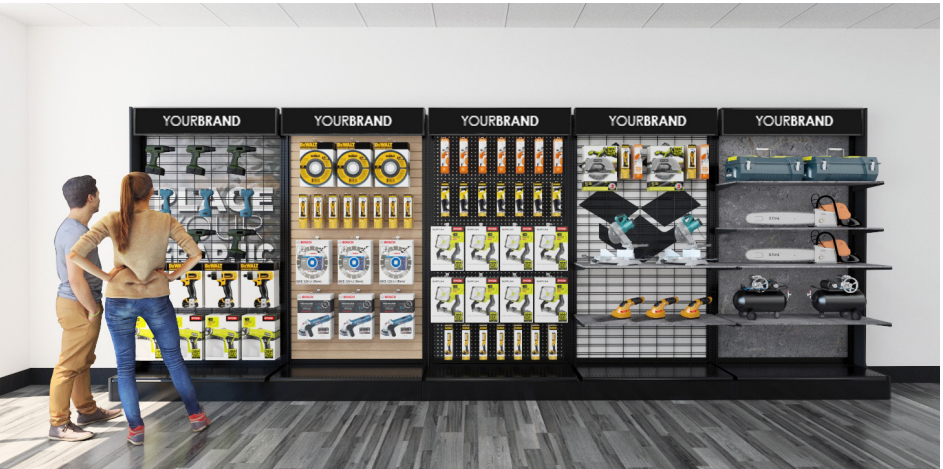
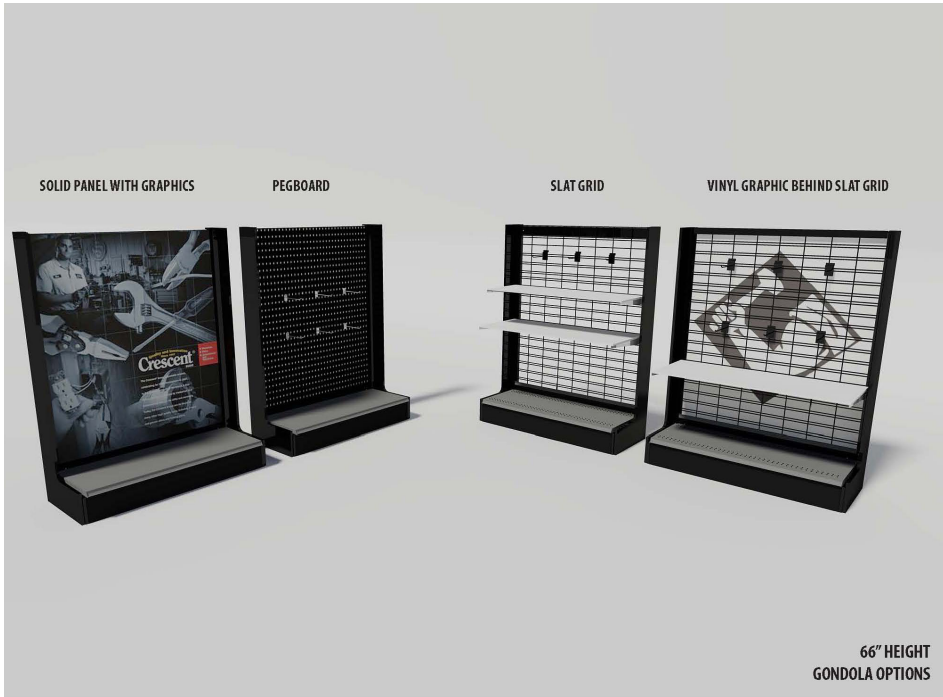
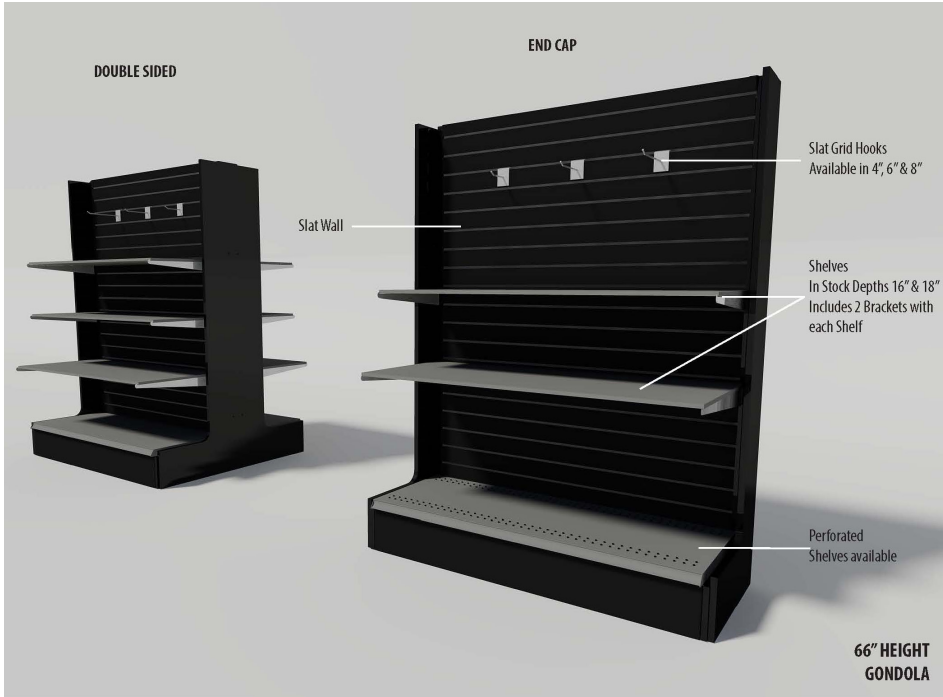
**End-Plate for Slim-Line 36" Endcap**  
Part #: PNL-0291  
Dims: 21" x 55" x 0.75"



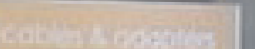
**End-Plate for Slim-Line 36" Endcap**  
Part #: PNL-0292  
Dims: 21" x 95" x 0.75"



















WWW.WALLSFORMS.COM

RETAIL DISPLAY SYSTEMS | COMPONENTS | STORE PACKAGES | BRANDED/P.O.P. | SIGNWARE | SHOWROOM

Questions? ... Need More Information? ... Contact Us Today!

info@wallsforms.com | 972-745-0800 | www.wallsforms.com

204 Airline Drive | Suite 200 | Coppell TX 75019

WWW.WALLSFORMS.COM