



WWW.WALLSFORMS.COM

RETAIL DISPLAY SYSTEMS | COMPONENTS | STORE PACKAGES | BRANDED/P.O.P. | SIGNWARE | SHOWROOM



WALLS + FORMS | RETAIL DISPLAY SOLUTIONS

WALLS + FORMS

SIMPLE

There are no complicated parts to worry about. Our system eliminates assembly errors, mis-ordering and high inventory costs. Each display consists of minimal components. Panels, panel fastening trims and accessory options come completely from one source, Walls+Forms. Panels snap together in minutes and full merchandising can be accomplished in a few hours.

AFFORDABLE

Part standardization permits low prices with low minimum quantity. High construction costs, mess and lengthy time delays are eliminated.

UPGRADEABLE

Each display system has been designed with the future in mind, need to upgrade your store? no problem, with Walls+Forms you will save thousands of dollars, start the right way by utilizing our systems from the beginning and never spend money on starting from scratch, with a very low budget you can create a whole new look in a matter of hours!

product

plates

frame

Are you as innovative as your competition?

It's a modular retail system already in use throughout Europe in major department stores.

It's easy to install, looks stunning and has a chameleon-like ability to change to suit the demands of today's retail environments.

WWW.WALLSFORMS.COM

T.V. Bracket

Removable Plates

Aluminum Frame System

Wood Furring Strips

Removable Cross Rails

1

DRILL FURRING STRIPS TO THE WALL

2

SECURE FRAME TO FURRING STRIPS

3

INSTALL NECESSARY CROSS RAILS

4

HANG DESIRED PLATE DESIGN

5

ACCESSORIZE TO YOUR NEEDS

WWW.WALLSFORMS.COM



Lightweight, structural T2 aluminum frame

Furring strips attach to existing wall and can extend for electrical outlets

Brackets are attached to furring strips for easy install onto existing wall

Removable cross rails for design freedom and reduced cost

Key Holes for attaching plates to frame system

1" opening doubles as cable management and mounting of accessories

Frame rests securely on ground with adjustable feet

T2+

MODULAR DISPLAY SYSTEM

FEATURES:

- Light-weight, structural, and sleek frame system
- Clean, effective wire management solution
- Effortlessly change out plates & colors
- Countless configuration and color options
- Quick and easy installation with minimal labor

SIMPLICITY OF PARTS

- Ships flat (RTA). Assembles in minutes!

AVAILABLE ACCESSORIES

- Shelves, back-lit headers, brackets, hooks, cabinets, end-caps and more!

Overall Dimensions:

41 (L) x 6.375" (W) x 93" (H)

WWW.WALLSFORMS.COM



Assemble frames **back-to-back** for free-standing applications



T2+

FREESTANDING MODULAR DISPLAY SYSTEM

FEATURES:

- Free-standing application!
- Light-weight, structural, and sleek frame system
- Clean, effective wire management solution
- Effortlessly change out plates & colors
- Define your retail space! Separate departments
- Quick and easy installation with minimal labor

SIMPLICITY OF PARTS

- Ships flat (RTA). Assembles in minutes!

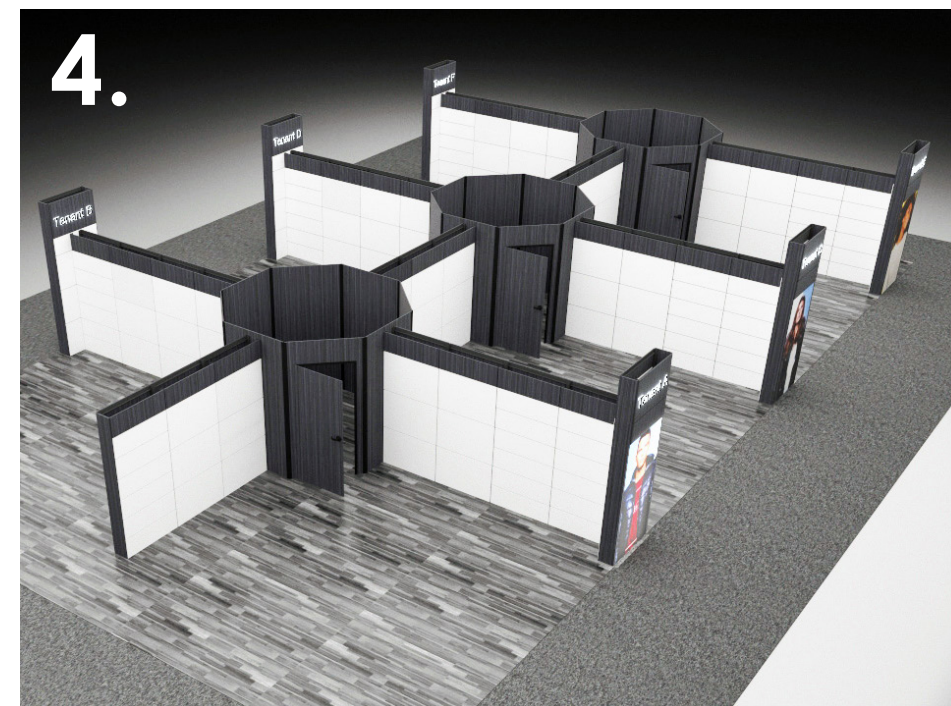
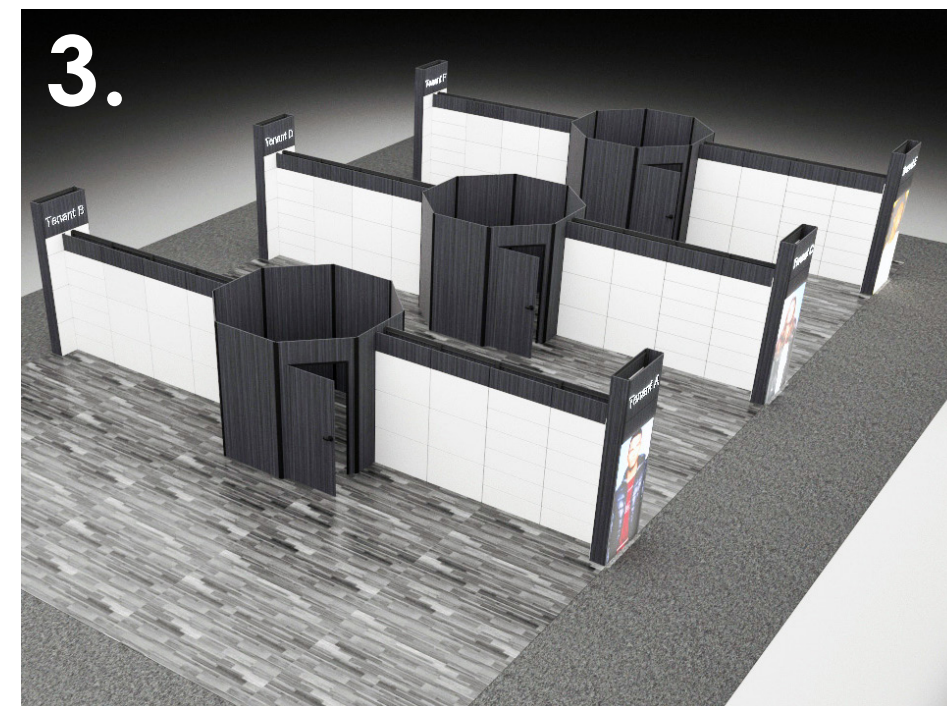
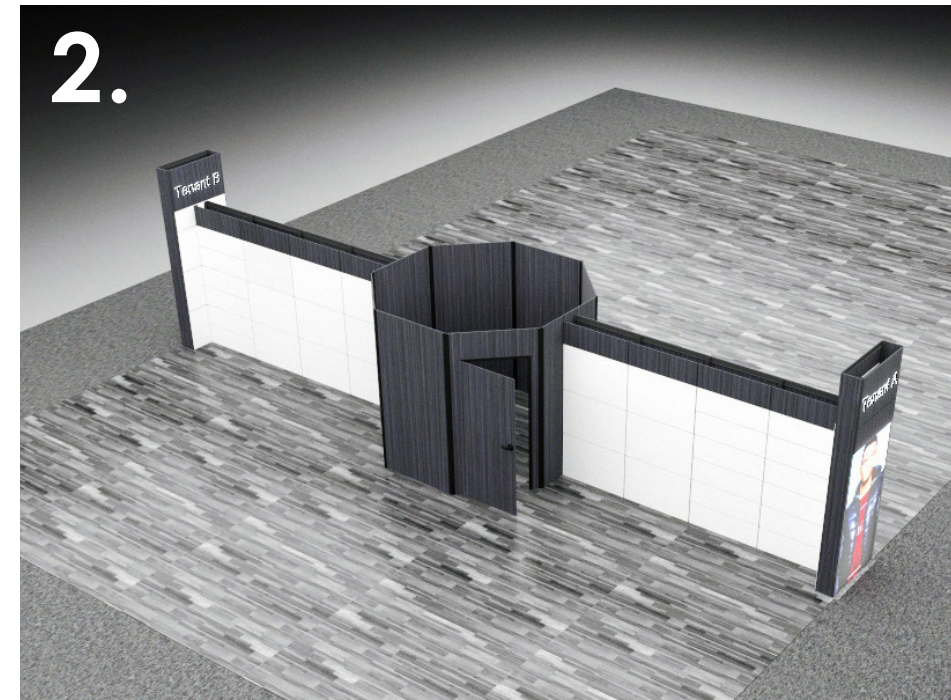
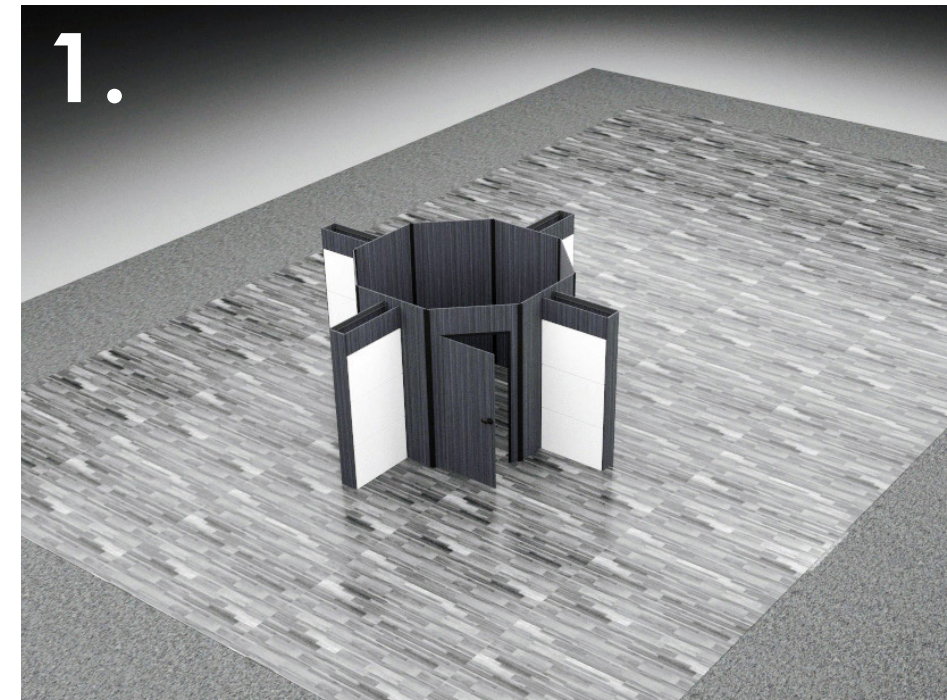
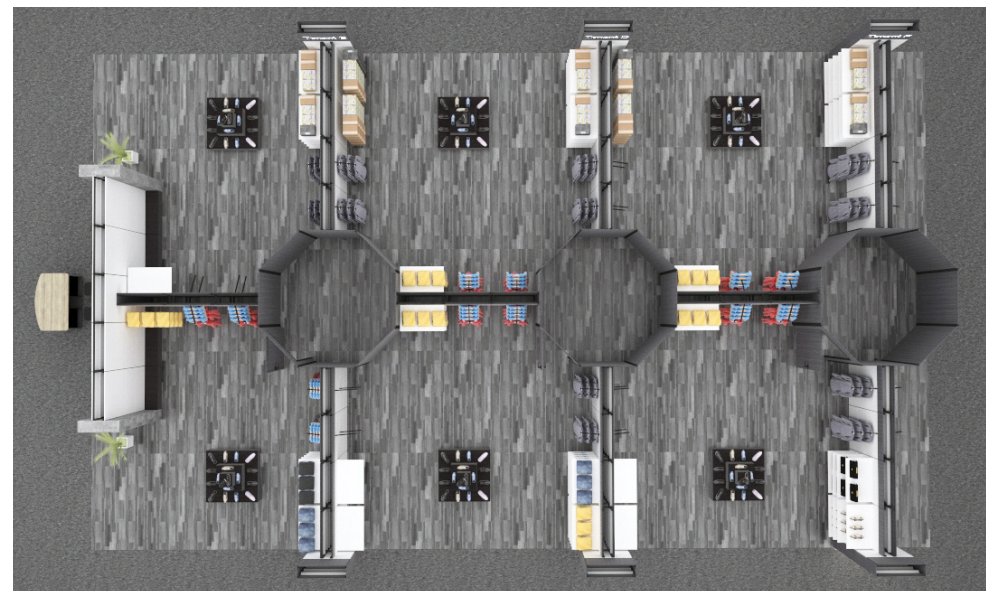
AVAILABLE ACCESSORIES

- Shelves, back-lit headers, brackets, hooks, cabinets, end-caps and more!

Overall Dimensions:
136(L) x 42.5"(W) x 93"(H)



T2+
CAN DEFINE YOUR SPACE
 With T2+ you can define your retail space to your advantage, whether you want to divide into different departments or separate your storage from your store front, T2+ is the way to go.



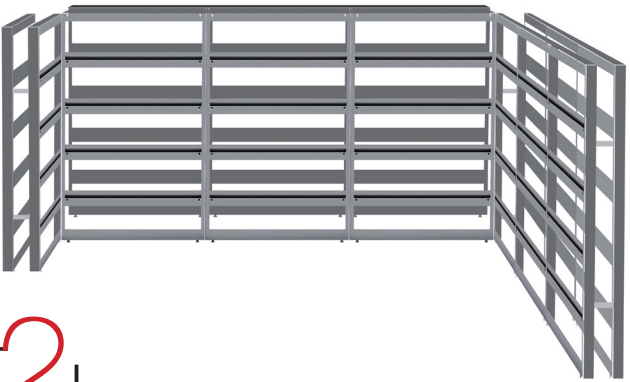
FREESTANDING CONFIGURATIONS

THE MODULAR DISPLAY SYSTEM THAT COMES OFF THE WALL!

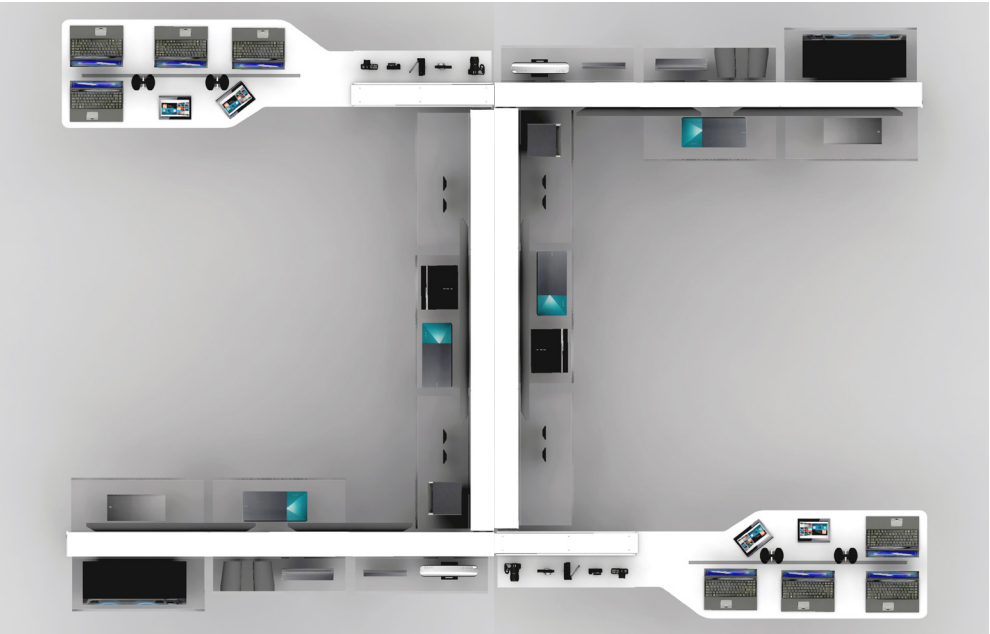


POP-UP SHOP

SET UP YOUR POP STORE IN STORE WITHOUT ANY CONSTRUCTION NEEDED!



T2+ FREESTANDING
MODULAR DISPLAY SYSTEM





T2+ MODULAR DISPLAY SYSTEM

A system with unlimited colors

Changing your store is now as easy as changing your mind!

FRAME

COLORS



Design Freedom

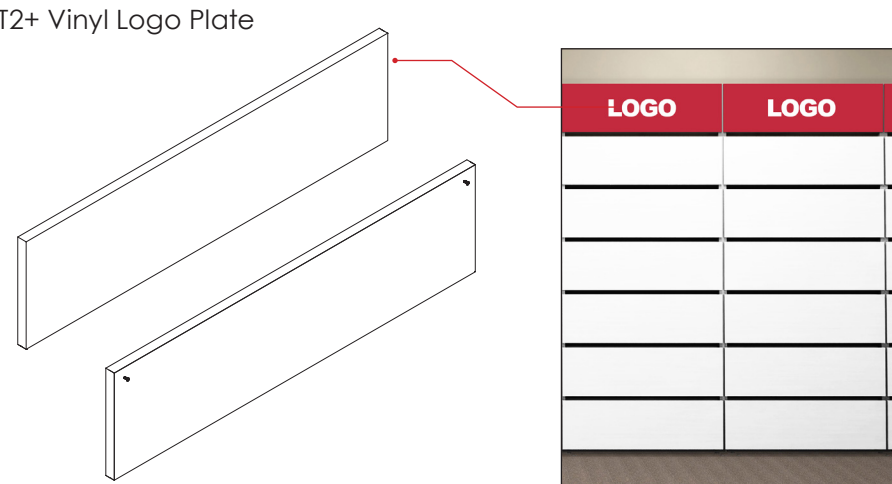
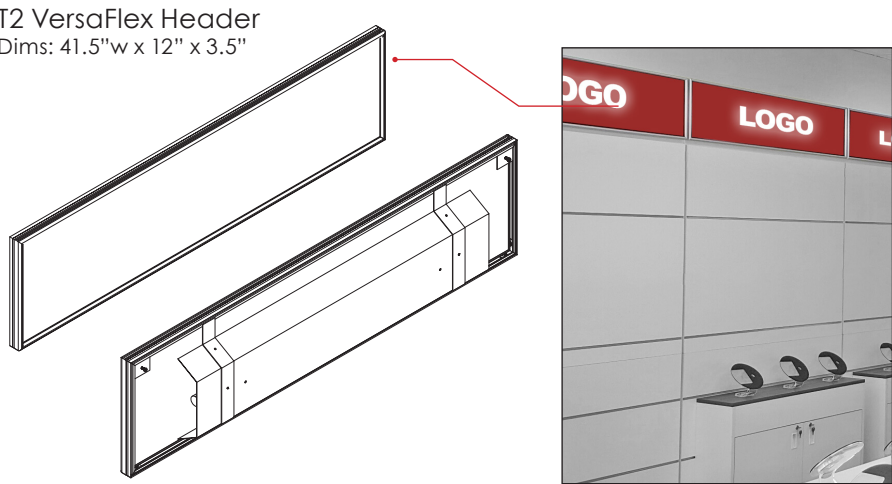
branding, seasonal colors, new products, new tenants & more.

Based on modular frame unit, a surface of easy-to-change colored plates and full range of fittings and accessories, this amazing modular system enables store staff to easily change the look of the store in minutes. With this kind of flexibility comes the freedom to change a wall to promote a sale event, change an entire shop to the new season's colors, or relocate a whole department; all without involving any contractors or outside labor.



T2+ MODULAR DISPLAY SYSTEM

HEADERS



Single Plate
for Full Frame
Part #: PG-FP-0007
Dims: 40.5" x 12"

Double Plate
for Full Frame
Part #: PG-FP-0009
Dims: 40.5" x 25.625"

Triple Plate
for Full Frame
Part #: PG-FP-0010
Dims: 40.5" x 39"

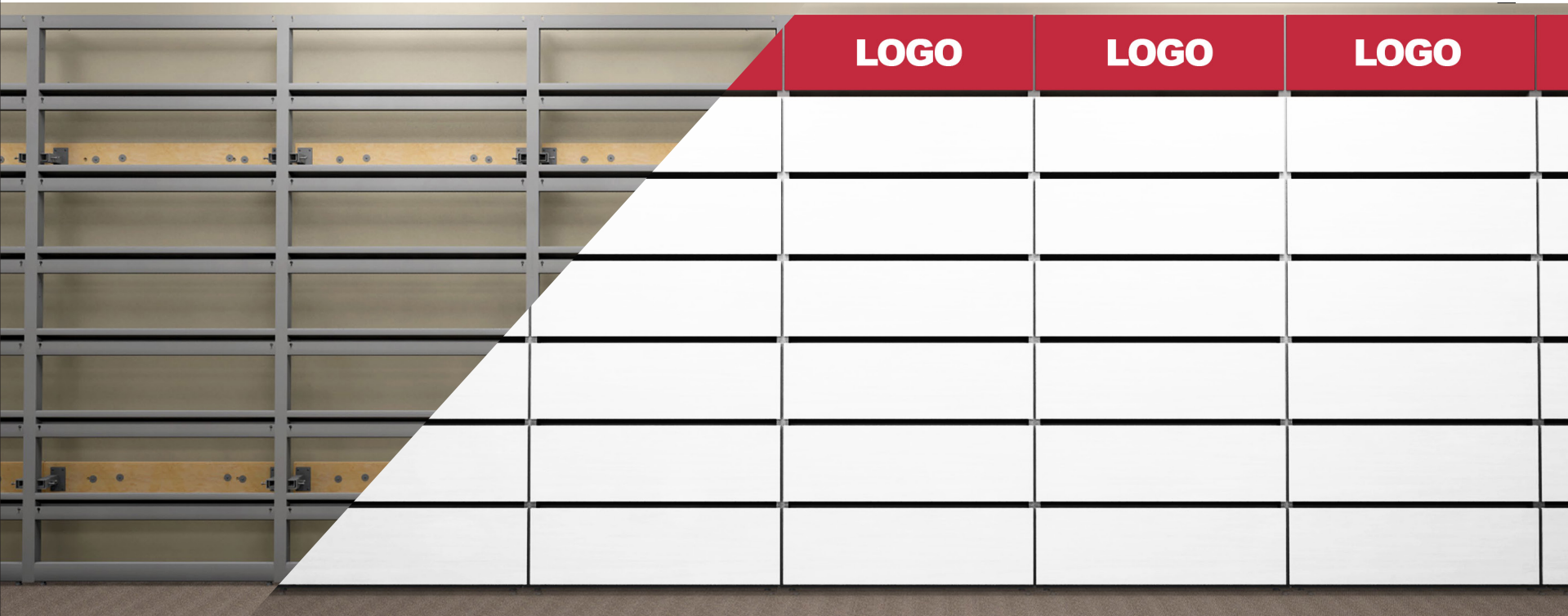
Single Plate
for Half Frame
Part #: PG-FP-0002
Dims: 20" x 12"

Double Plate
for Half Frame
Part #: PG-FP-0004
Dims: 20" x 25.625"

Triple Plate
for Half Frame
Part #: PG-FP-0005
Dims: 20" x 39"

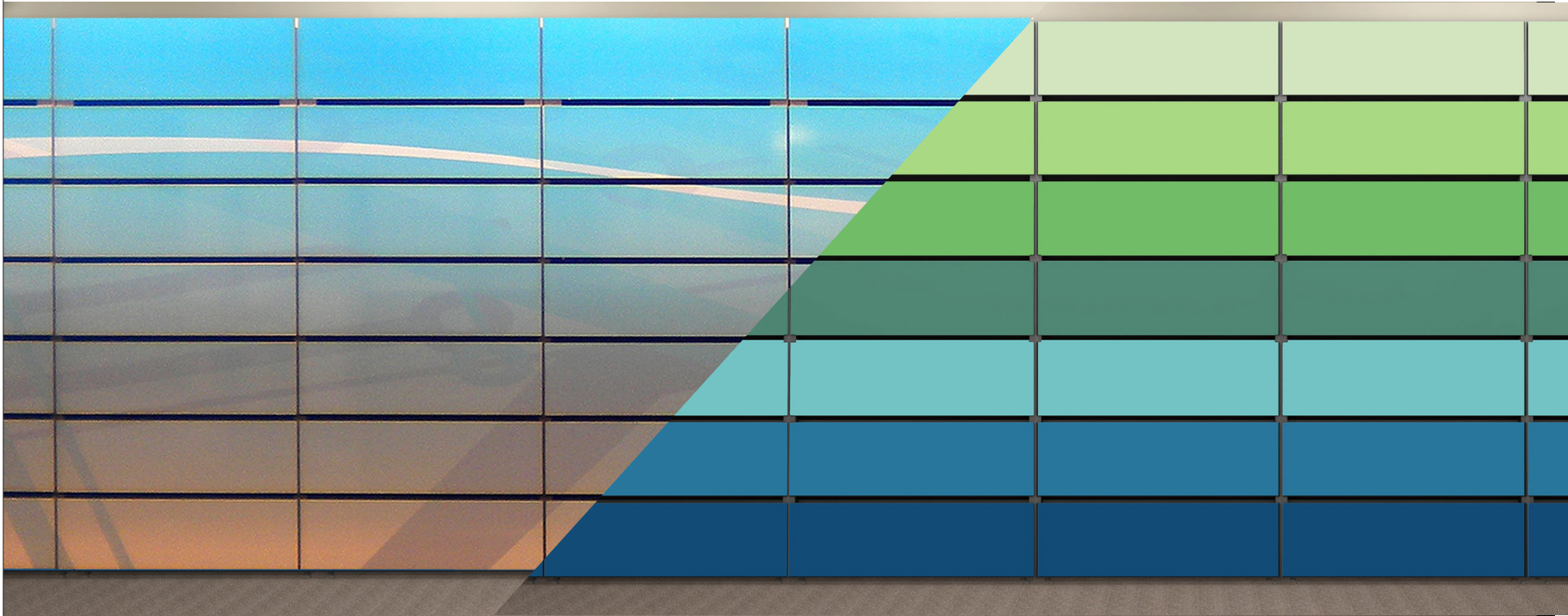
End-Plate
Part #: PG-EP-0001
6" x 93"

EASE OF INSTALLATION



ADD VINYL LOGO OR BACKLIT HEADERS

DISPLAY GRAPHICS



ADD MULTI-COLORED PLATES

ANY SIZE PLATE + LIGHTBOXES



INFINITE FINISH OPTIONS

HANG AND DISPLAY PRODUCTS



CREATE STUNNING FEATURE WALLS

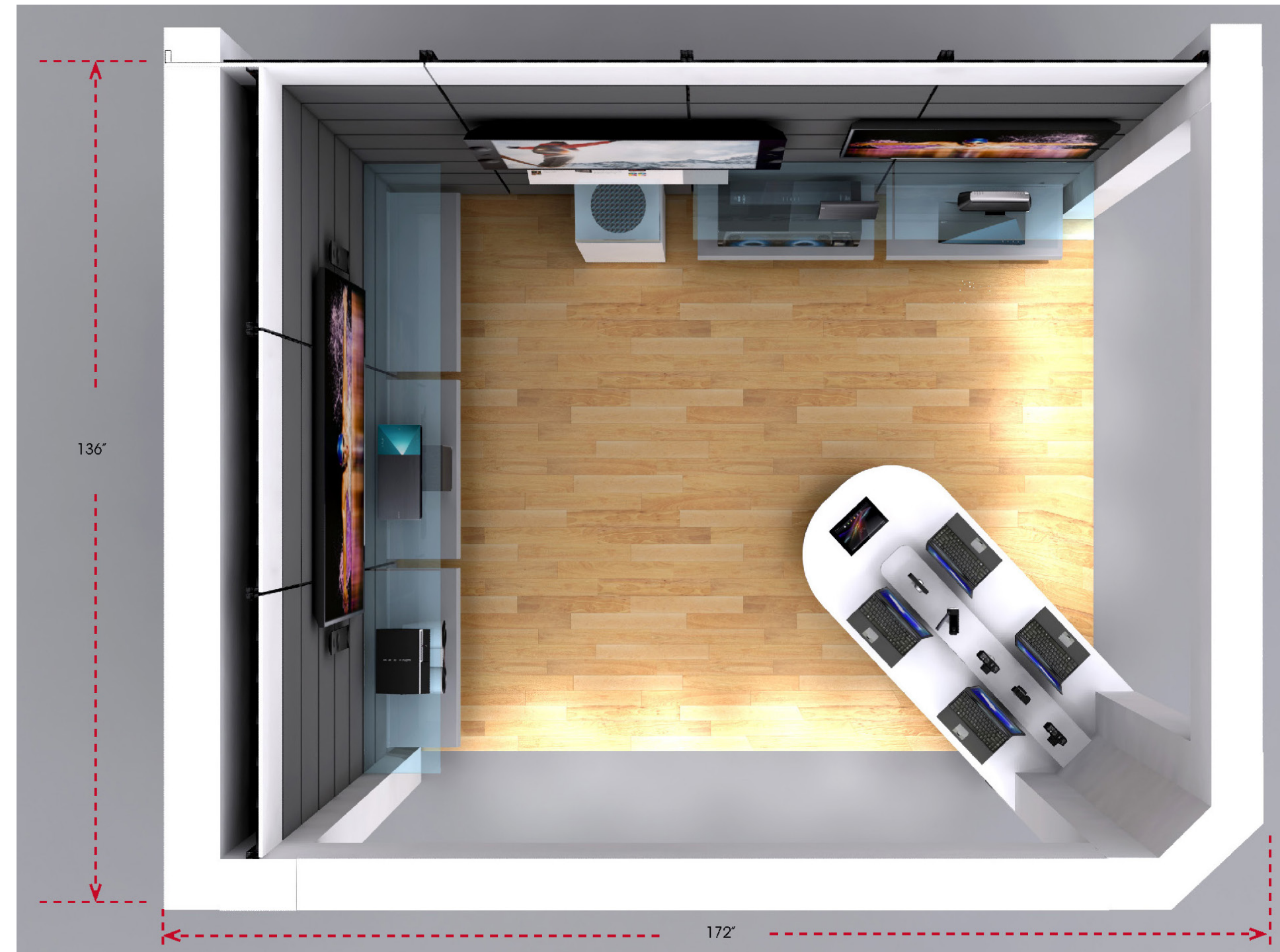
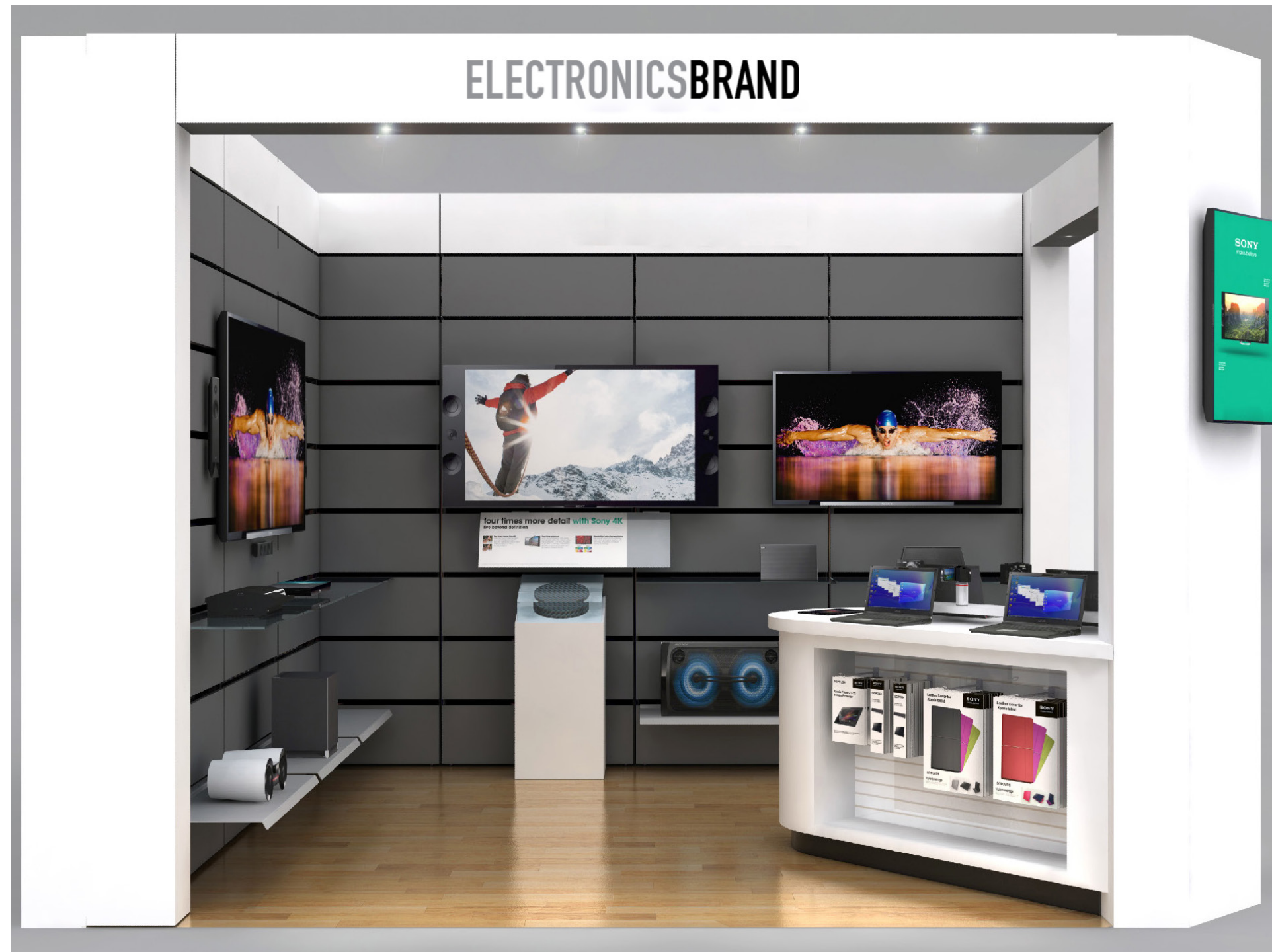


IMAGE GALLERY

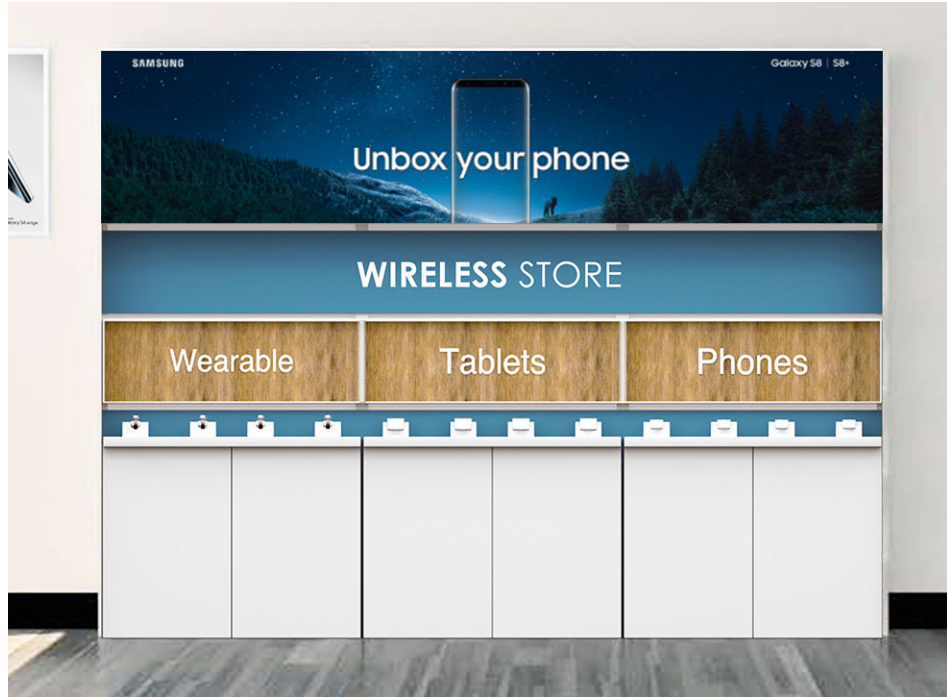


























WWW.WALLSFORMS.COM

WWW.WALLSFORMS.COM

RETAIL DISPLAY SYSTEMS | COMPONENTS | STORE PACKAGES | BRANDED/P.O.P. | SIGNWARE | SHOWROOM

Questions? ... Need More Information? ... Contact Us Today!

info@wallsforms.com | 972-745-0800 | www.wallsforms.com

204 Airline Drive | Suite 200 | Coppell TX 75019