

WALLS + FORMS



T2 Modular Wall System

A SYSTEM BUILT ON CHANGE

The T2 Modular Wall System by Walls + Forms is packed with Benefits:



- Easy concealment of cables and power outlets
- Easy front loading access to power and wiring
- High load-bearing capacity
- Easy to assemble modular frame system
- No complicated parts to “worry about”
- Minimal wall preparation - easily goes up in front of unpainted walls
- Saves up to 60% of man-hours during installation stage
- Easy to change configurations - add modules or walls in minutes
- Change your store color by simply changing the plates
- Enables you to “future-proof” your store by addressing change easily & quickly

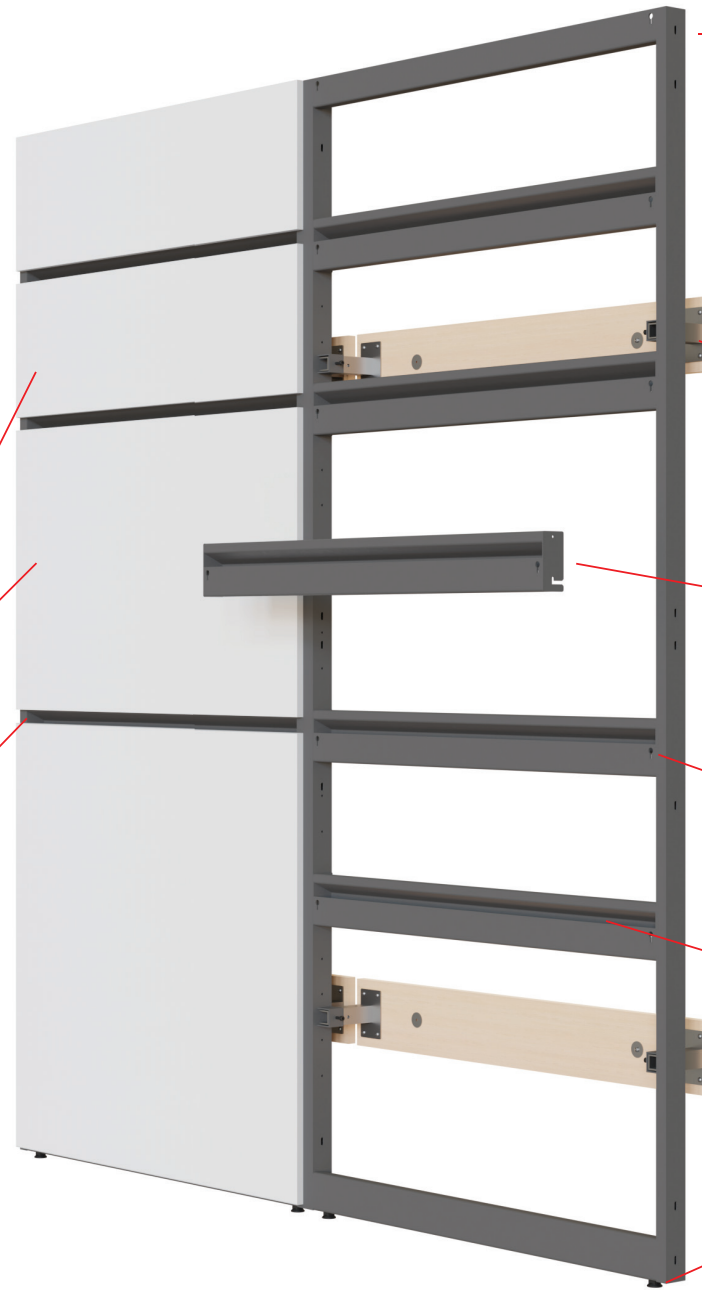
T2 Modular Wall System

W A L L S + F O R M S

Plates available in various sizes

Spacing can be adjusted from 1" to 3/8" opening

Overall Dimensions:
41" (L) x 6.375" (W) x 93" (H)



Lightweight structural T2 Aluminum Frame

Furring Strip attach to existing wall and can extend for electrical outlets

Brackets are attached to furring strips for easy install onto existing wall

Removable cross rails for design freedom and reduced cost

Key Holes for attaching plates to frame system

1" opening doubles as cable management and mounting of accessories

Frame rests securely on ground with adjustable feet

T2 Modular Wall System

Freestanding Configuration

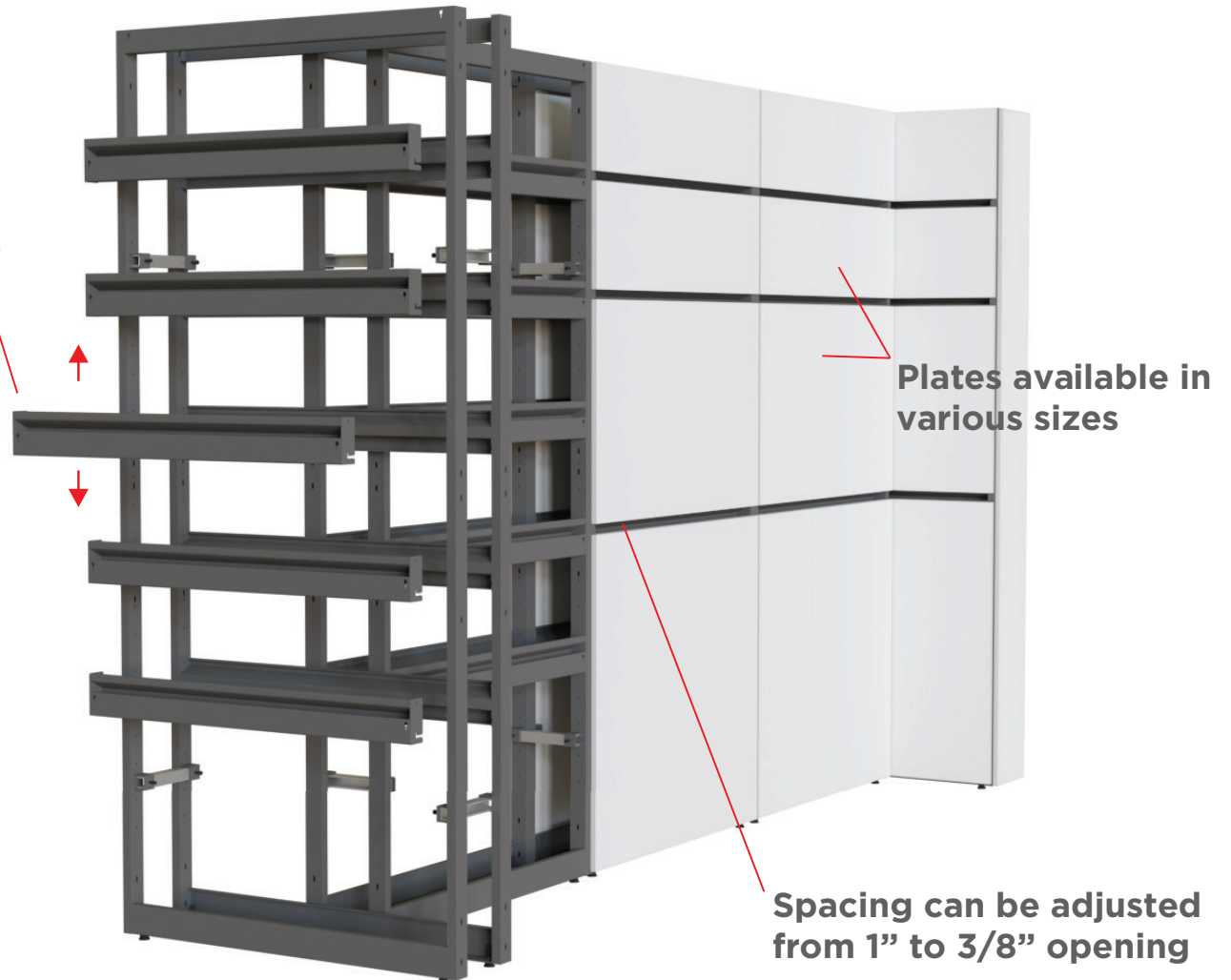
W A L L S + F O R M S

Assemble frames **back to back**
for freestanding applications

Adjustable cross rail can be
placed where ever needed

- Free-standing application
- Quick and Easy installation
- Light weight, structural, sleek
frame system
- Clean, effective wire
management system
- Effortlessly change plates and
color
- Define your retail space

Overall Dimensions:
136" (L) x 42.5" (W) x 93" (H)



W A L L S + F O R M S

41" FRAME

7- PLATE FRAME PG-WL-0353

Dimensions:
H: 92.5" W: 41.5" D: 2"
Material:
powder coated aluminum



20" FRAME

7- PLATE FRAME PG-WL-0343

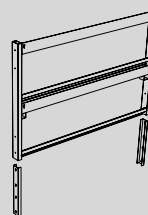
Dimensions:
H: 92.5" W: 20.5" D: 2"
Material:
powder coated aluminum



EXTENSIONS

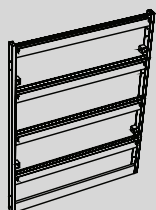
41" FRAME EXTENSION PG-WL-0353

Dimensions:
H: 26" W: 41.5" D: 2"
Material:
powder coated aluminum



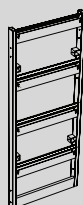
4- PLATE FRAME 70525

Dimensions:
H: 53.5" W: 41.5" D: 2"
Material:
powder coated aluminum



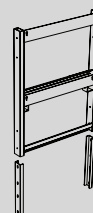
4- PLATE FRAME PG-WL-0353

Dimensions:
H: 53.5" W: 20.5" D: 2"
Material:
powder coated aluminum



20" FRAME EXTENSION PG-WL-0353

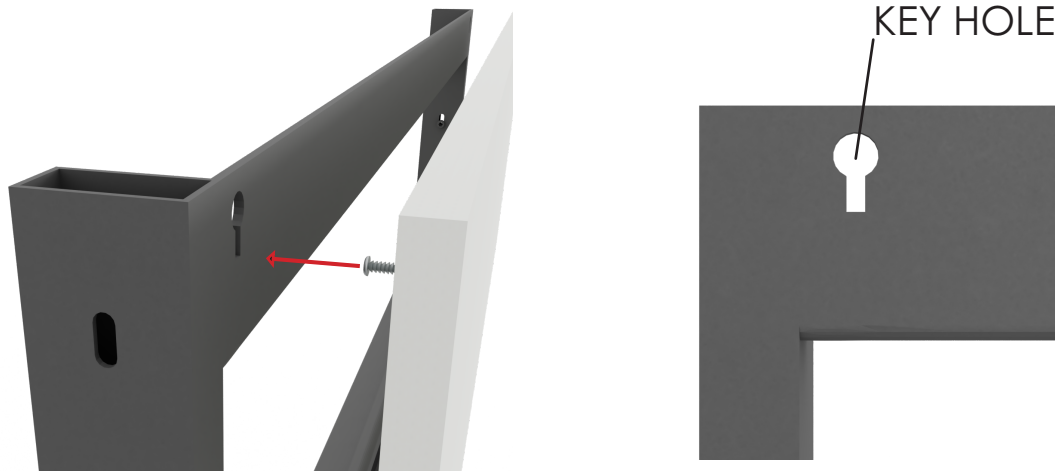
Dimensions:
H: 26" W: 20.5" D: 2"
Material:
powder coated aluminum



Light Weight & High Load carrying capacity

Over 20 years and hundreds of installations, the engineering synergy of frames, plates and accessories creates a strong yet lightweight system that is unsurpassed in the retail fixture industry. The uncomplicated, easy to use system has a merchandising load carrying capacity exceeding 700 lbs per panel frame (safety factor included)

PLATES



A Surface of easy-to-change colored plates and full range of fittings and accessories, this amazing modular system enables store staff to easily change the look of a store in minutes.

Standard Finishes:



White



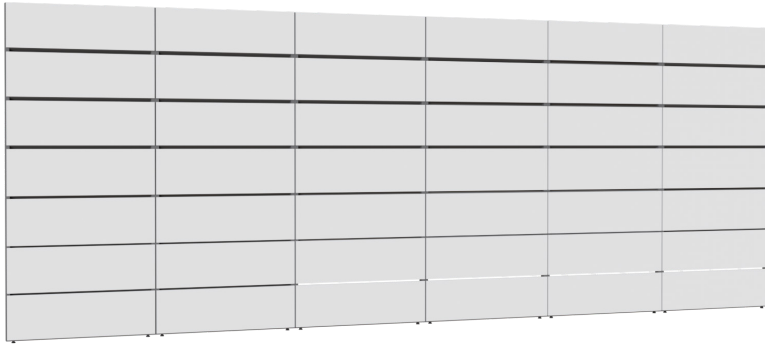
Black



Gray

Standard Panel Gap	=	1/2	1	1	1		
	=	1/2					
	=	1/2	1				
	=	1/2		2			
	=	1/2	1		3	4	5
	=	1/2					
	=	1/2	1	2			
	=	1/2					
Minimum Panel Gap	=	1/2	1				
	=	1/2					
	=	1/2	1				
	=	1/2					
	=	1/2	1	2	3	3	
	=	1/2					
	=	1/2	1				2
	=	1/2					

ADAPTABILITY



The T2 Wall System is designed to adapt to any pre-existing wall construction it. No permit required to modify your space to meet your retail needs.

Adapt to irregular existing walls with **NO CONSTRUCTION PERMITS** required



Divide Wall to Adapt to pre-existing column



Extend Wall to Adapt to pre-existing column



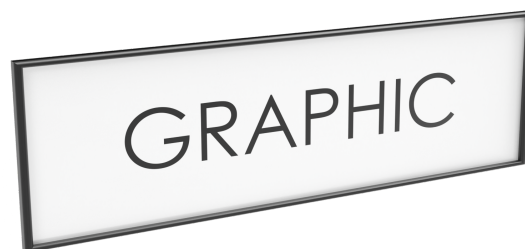
Adapt to irregular wall with extended connector



HEADERS

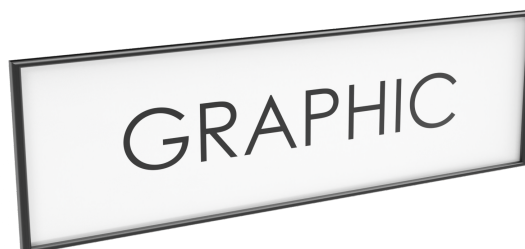
T2 Versaflex Header **SG-0183**

Dimensions:
H: 12.25" W: 41" D: 2"



T2 Illuminated Header **PG-HD-2605**

Dimensions:
H: 12.25" W: 41" D: 7"



T2 Canopy (w/ lighting) **PG-HD-0008**

T2 Canopy (non-lit)
PG-HD-2686

Dimensions:
H: 6" W: 41" D: 11.75"



T2 Optical Canopy **PG-HD-0012**

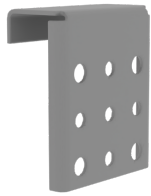
Dimensions:
H: 12.25" W: 41" D: 7"



ACCESSORIES

MOUNTING BRACKET 70158

Dimensions:
H: 2.9" W: 41.5" D: 2"
Material:
powder coated aluminum



TV MOUNTING BRACKET 70145

Dimensions:
H: 18.25" W: 2" D: 2"
Material:
powder coated aluminum



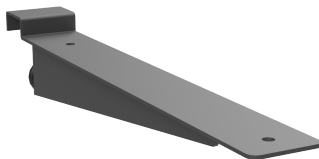
18" Extension Bracket 70267

Dimensions:
H: 2" W: 18"
Material:
powder coated aluminum



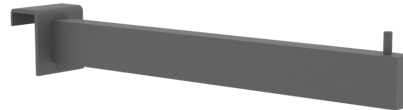
SHELF BRACKET 70338

Dimensions:
H: 2.8" W: 2" D: 14"
Material:
powder coated aluminum



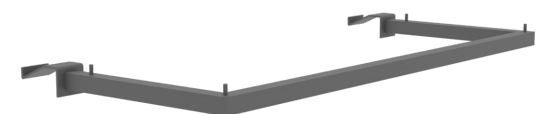
FACE OUT HANGRAIL PG-AC-2961

Dimensions:
H: 2" W: 2" D: 12"
Material:
powder coated aluminum



HANGRAIL (HEAVY DUTY) PG-AC-2448

Dimensions:
H: 2" W: 35" D: 16"
Material:
powder coated aluminum



ACCESSORIES

17" METAL SHELF (LIP DOWN)

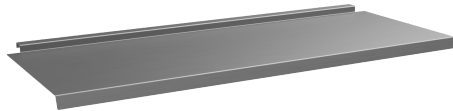
70524

Dimensions:

H: 4" W: 38" D: 17"

Material:

powder coated aluminum



Wood Shelf (Full Frame)

PG-SH-0006

Dimensions:

H: 4" W: 41" D: 15"

Material:

MDF & HPL



Wood Shelf (Half Frame)

PG-SH-0006

Dimensions:

H: 4" W: 20.5" D: 15"

Material:

MDF & HPL



4" T2 Peg Hook

40561

Dimensions:

H: 2" W: 1" D: 4"

Material:

powder coated aluminum



8" T2 Peg Hook

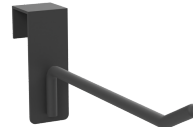
70369

Dimensions:

H: 2" W: 1" D: 8"

Material:

powder coated aluminum



12" T2 Peg Hook

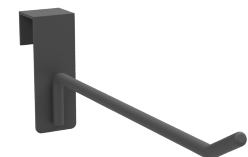
70636

Dimensions:

H: 2" W: 1" D: 12"

Material:

powder coated aluminum



ACCESSORIES

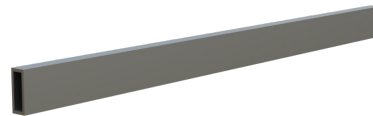
Hangrail Mount **70652**

Dimensions:
H: 3" W: 2" D: 4"
Material:
powder coated aluminum



WonderBar **70653**

Dimensions:
custom length
Material:
brushed aluminum



Mobile Cabinet **PG-CB-0007**

Dimensions:
H: 2" W: 18"
Material:
MDF & HPL



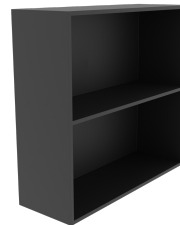
Hanging Optical Cabinet **PG-CB-0032**

Dimensions:
H: 4" W: 41" D: 17"
Material:
MDF & HPL



Open Hanging Cabinet **PG-CB-2755**

Dimensions:
H: 38" W: 41" D: 14"
Material:
MDF & HPL



Hanging Cabinet **PG-CB-2754**

Dimensions:
H: 38" W: 41" D: 14"
Material:
MDF & HPL



CAPABILITIES



CAPABILITIES



CAPABILITIES



W A L L S + F O R M S

